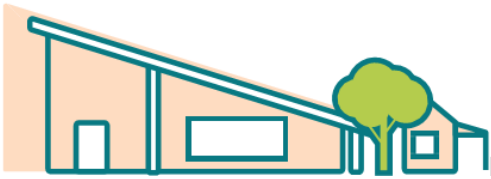




# Enfield

PRIMARY SCHOOL



2023 annual report to the Community

## Enfield Primary School

Enfield Primary School number: 660

Partnership: Torrens



School principal:

Rebecca Knight

Date of endorsement:

05/02/2024



Government  
of South Australia  
Department for Education

# Context Statement

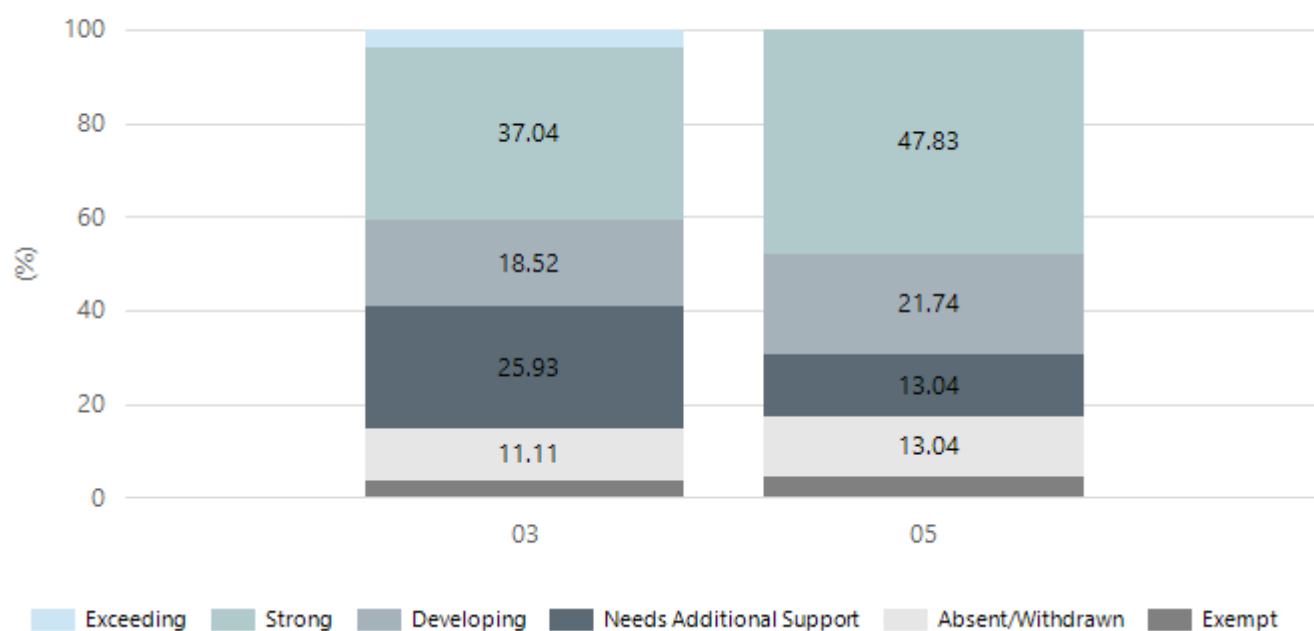
Enfield Primary School caters for students from R-6, which includes a Department Junior Primary Special Options class. At the time of this report, the enrolment in 2023 is 177. Enfield Primary School is classified as Category 2 on the Department for Education Index of Educational Disadvantage. At the time of this report, the school population includes 17% Aboriginal students, 21% students with disabilities, 48% students with English as an additional language or dialect (EALD) funded background, 3% children/young people in care. Further information about the school is available on the school's website (including its context statement), as well as the My School website.

## Performance Summary

### NAPLAN Proficiency

In 2023, the Australian Curriculum, Assessment and Reporting Authority (ACARA) - a Commonwealth Independent statutory authority - announced changes to NAPLAN performance reporting. This new way of reporting by ACARA that NAPLAN results from 2023 will not be comparable to previous years. The new approach replaces the previous numerical NAPLAN bands and the national minimum standard.

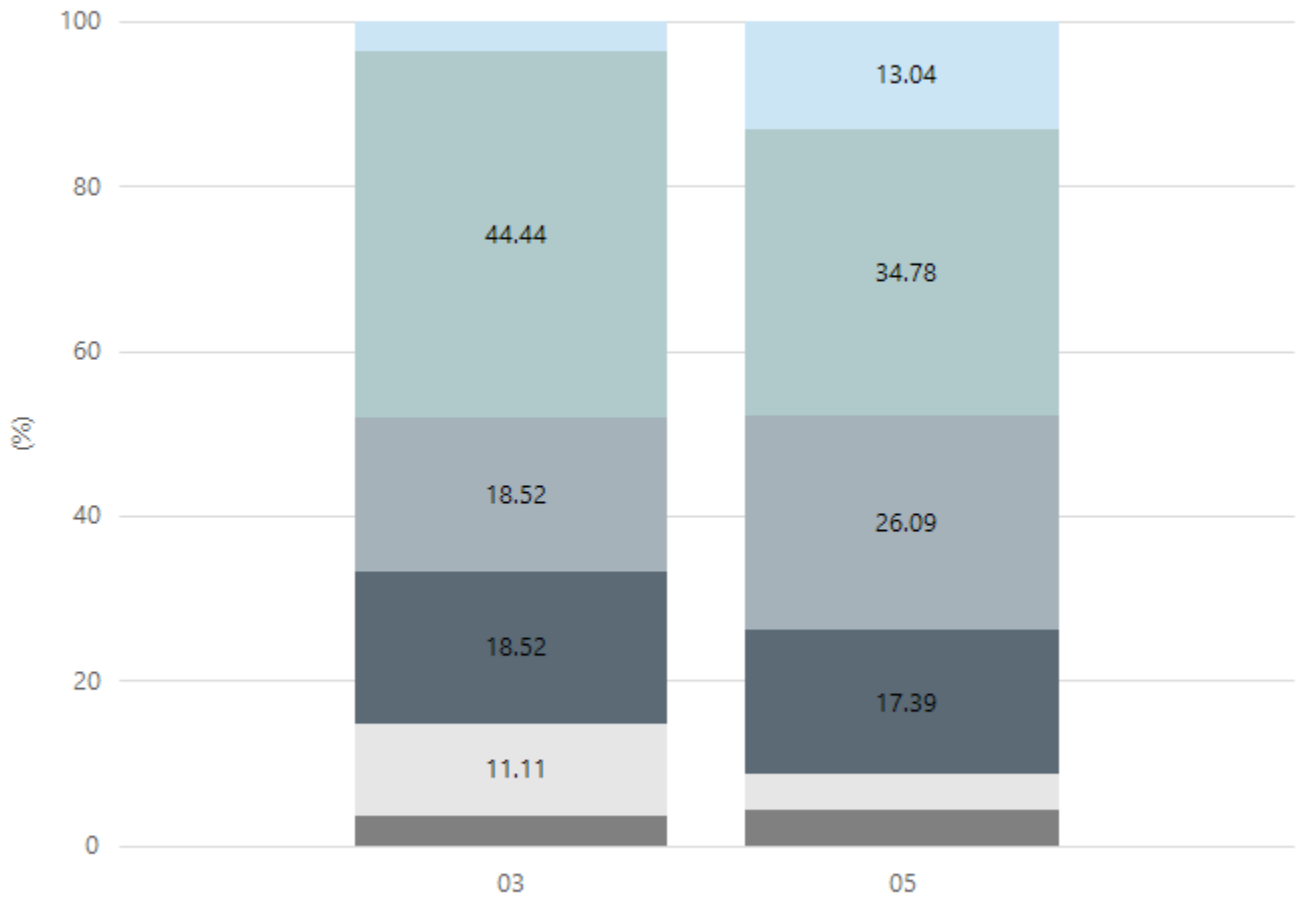
#### Numeracy



Year Level	03	05
Exceeding	1	
Strong	10	11
Developing	5	5
Needs Additional Support	7	3
Absent/Withdrawn	3	3
Exempt	1	1
Total	27	23

Data Source: Department for Education Assessment Data Holdings, 2023. When there are less than six students in a cohort, no data is supplied.

## Reading

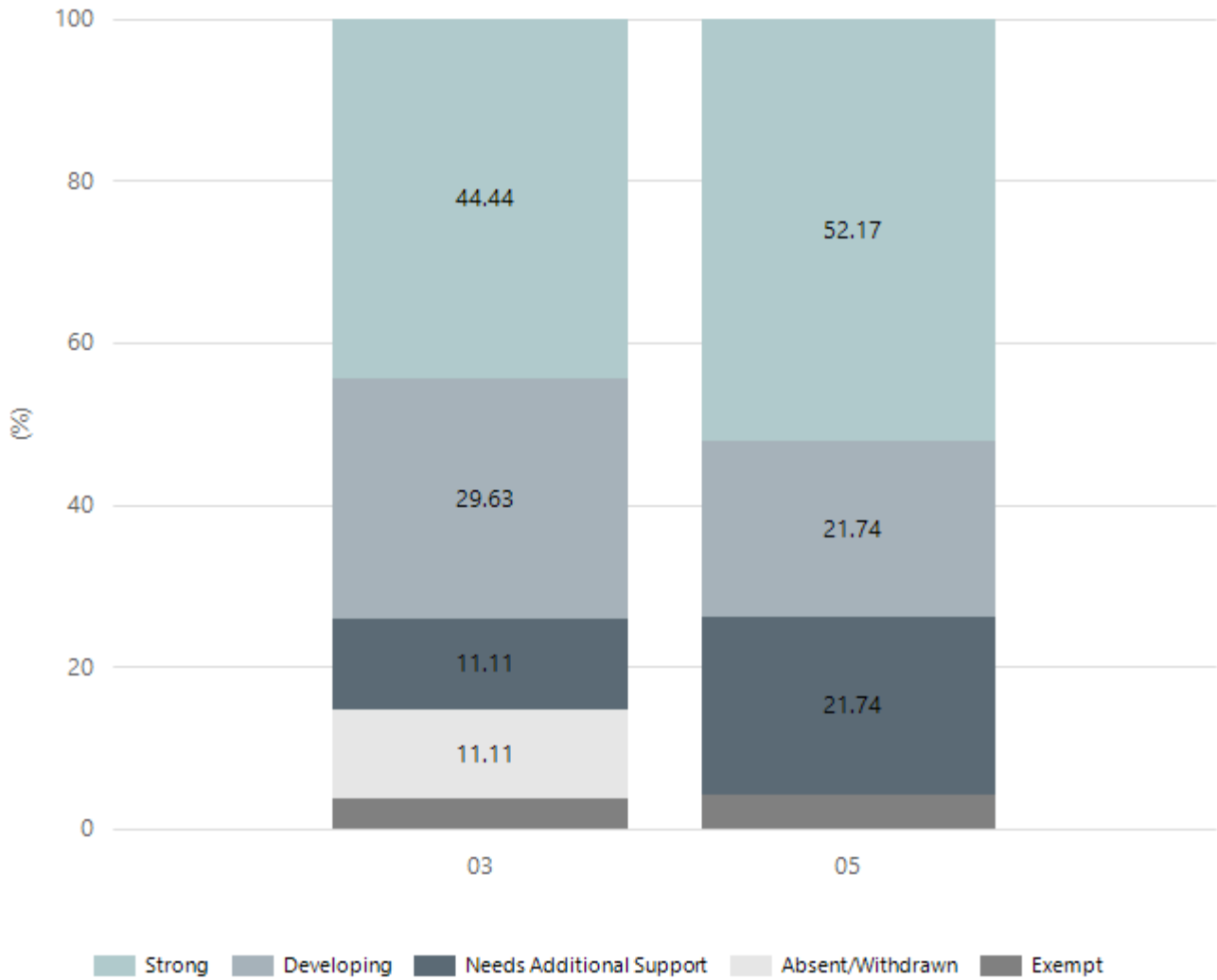


■ Exceeding 
 ■ Strong 
 ■ Developing 
 ■ Needs Additional Support 
 ■ Absent/Withdrawn 
 ■ Exempt

Year Level	03	05
Exceeding	1	3
Strong	12	8
Developing	5	6
Needs Additional Support	5	4
Absent/Withdrawn	3	1
Exempt	1	1
<b>Total</b>	<b>27</b>	<b>23</b>

Data Source: Department for Education Assessment Data Holdings, 2023. When there are less than six students in a cohort, no data is supplied.

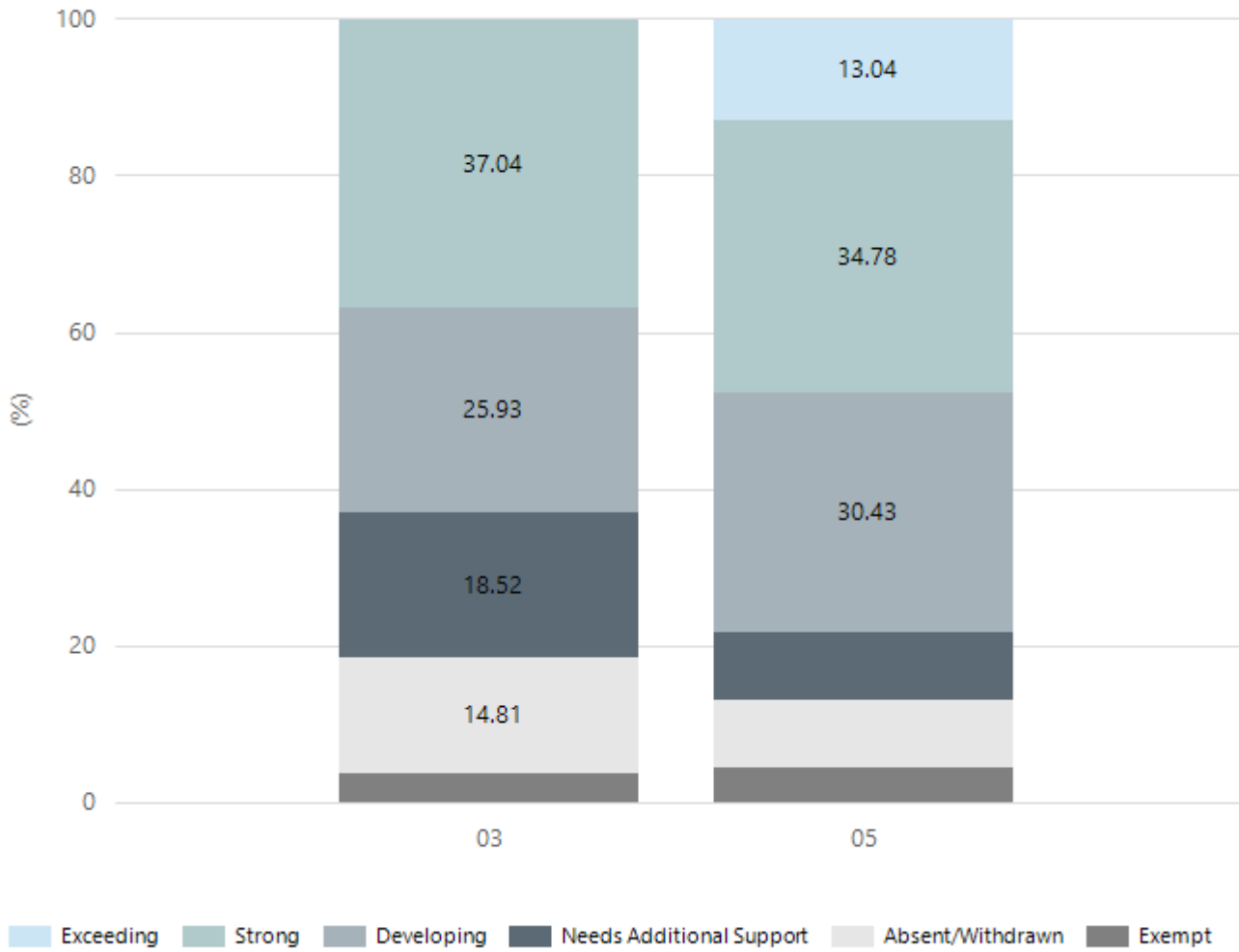
## Writing



Year Level	03	05
Strong	12	12
Developing	8	5
Needs Additional Support	3	5
Absent/Withdrawn	3	
Exempt	1	1
Total	27	23

Data Source: Department for Education Assessment Data Holdings, 2023. When there are less than six students in a cohort, no data is supplied.

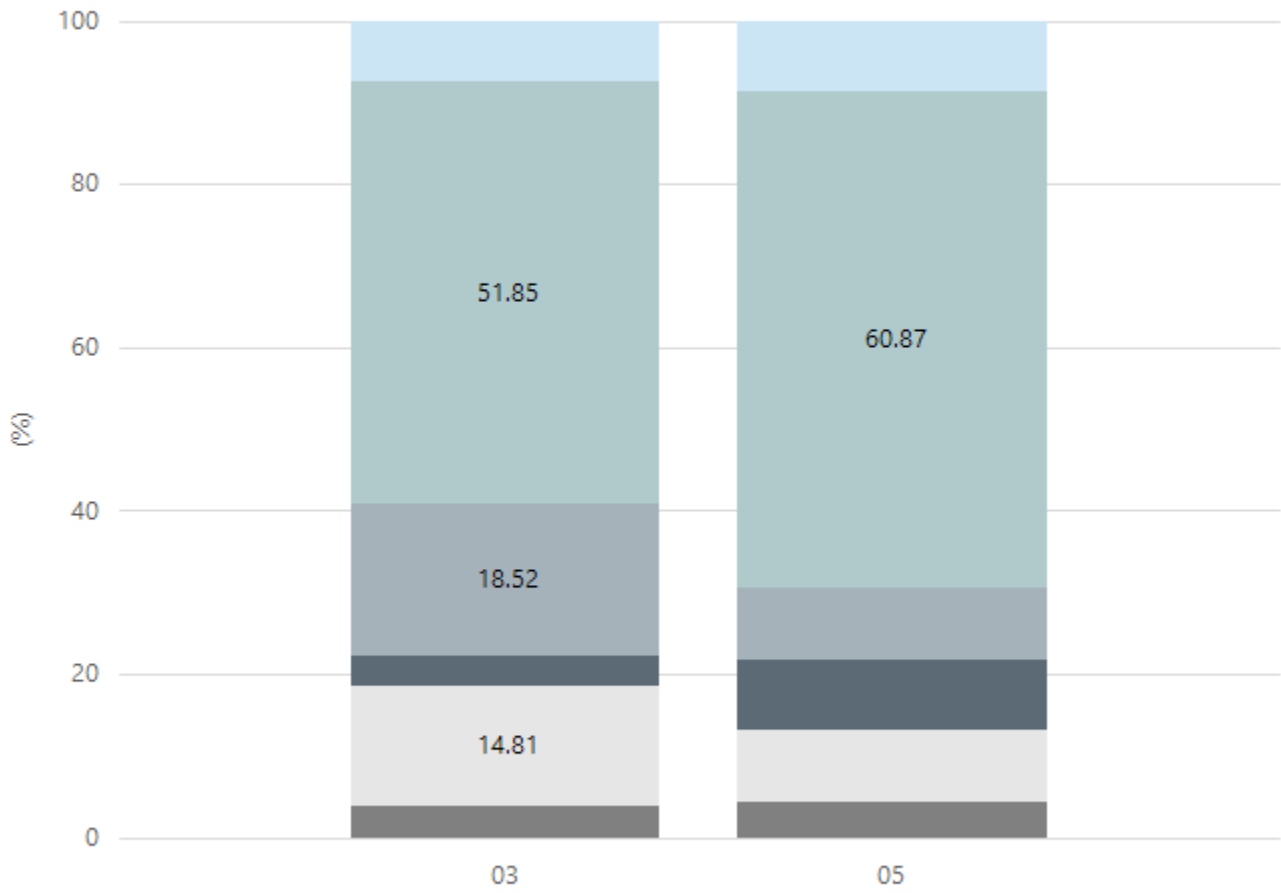
## Grammar



Year Level	03	05
Exceeding		3
Strong	10	8
Developing	7	7
Needs Additional Support	5	2
Absent/Withdrawn	4	2
Exempt	1	1
Total	27	23

Data Source: Department for Education Assessment Data Holdings, 2023. When there are less than six students in a cohort, no data is supplied.

## Spelling



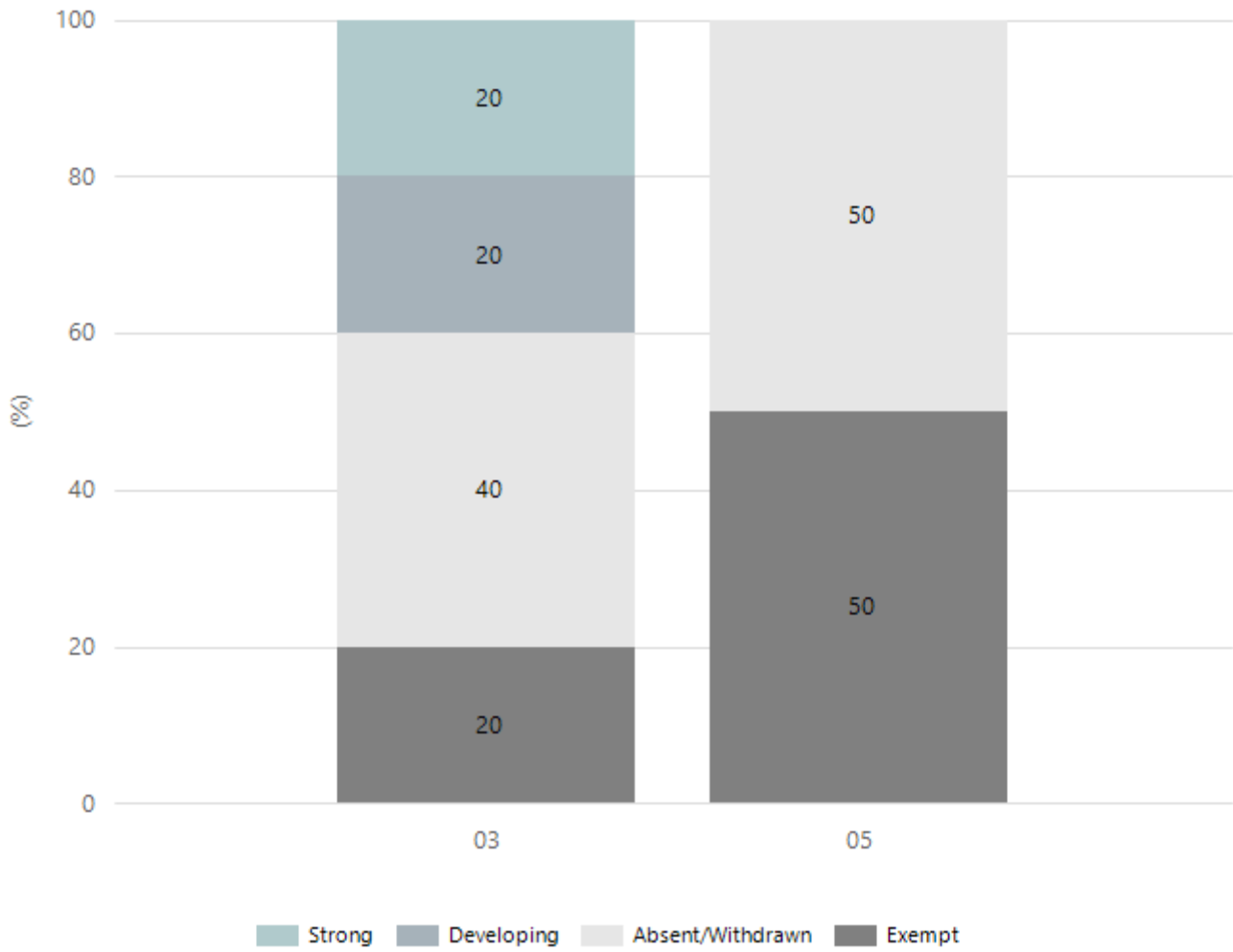
Exceeding Strong Developing Needs Additional Support Absent/Withdrawn Exempt

Year Level	03	05
Exceeding	2	2
Strong	14	14
Developing	5	2
Needs Additional Support	1	2
Absent/Withdrawn	4	2
Exempt	1	1
Total	27	23

Data Source: Department for Education Assessment Data Holdings, 2023. When there are less than six students in a cohort, no data is supplied.

# NAPLAN Proficiency - Aboriginal Learners

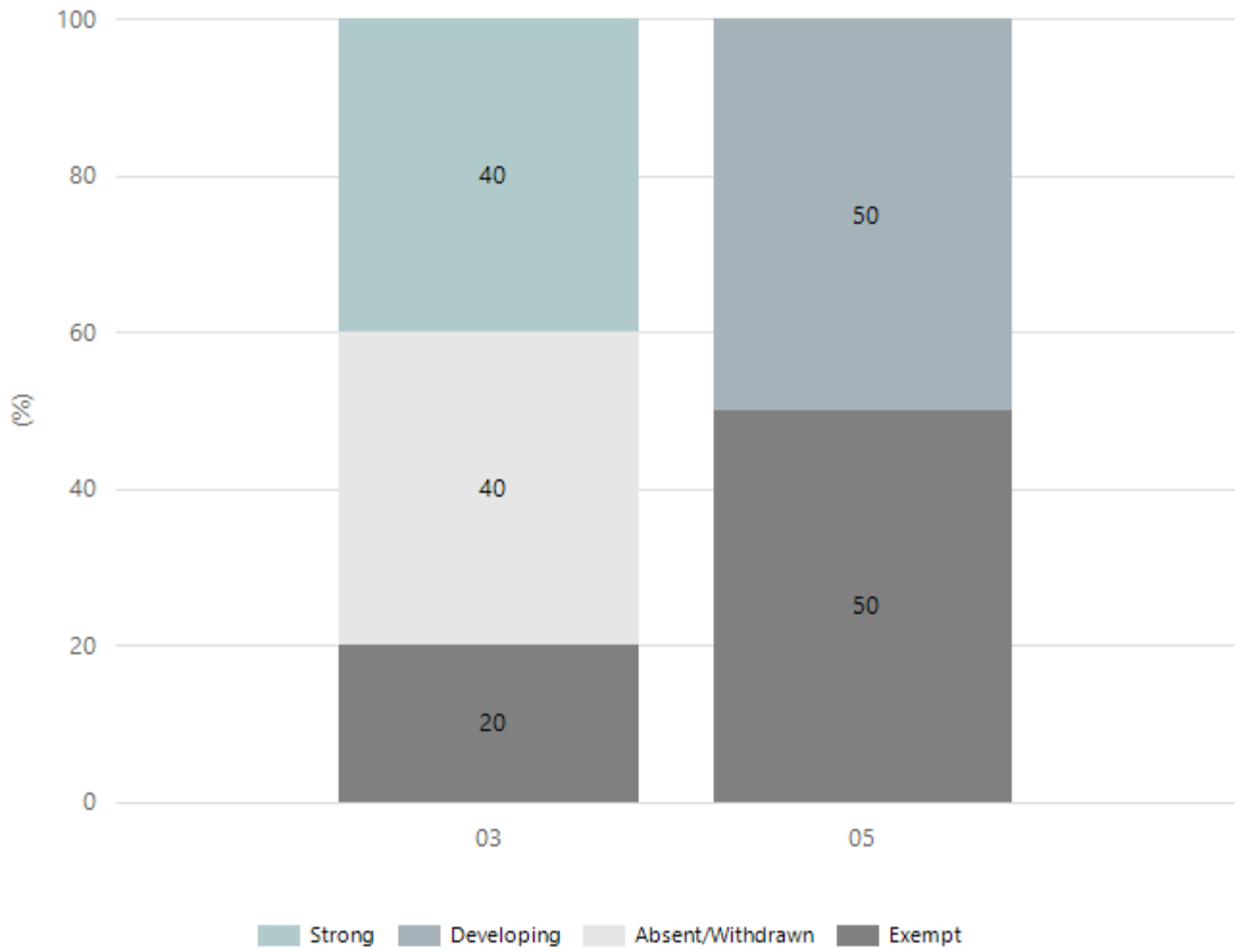
## Numeracy



Year Level	03	05
Strong	1	
Developing	1	
Absent/Withdrawn	2	1
Exempt	1	1
Total	5	2

Data Source: Department for Education Assessment Data Holdings, 2023. When there are less than six students in a cohort, no data is supplied. Only data for Aboriginal learners is displayed.

## Reading

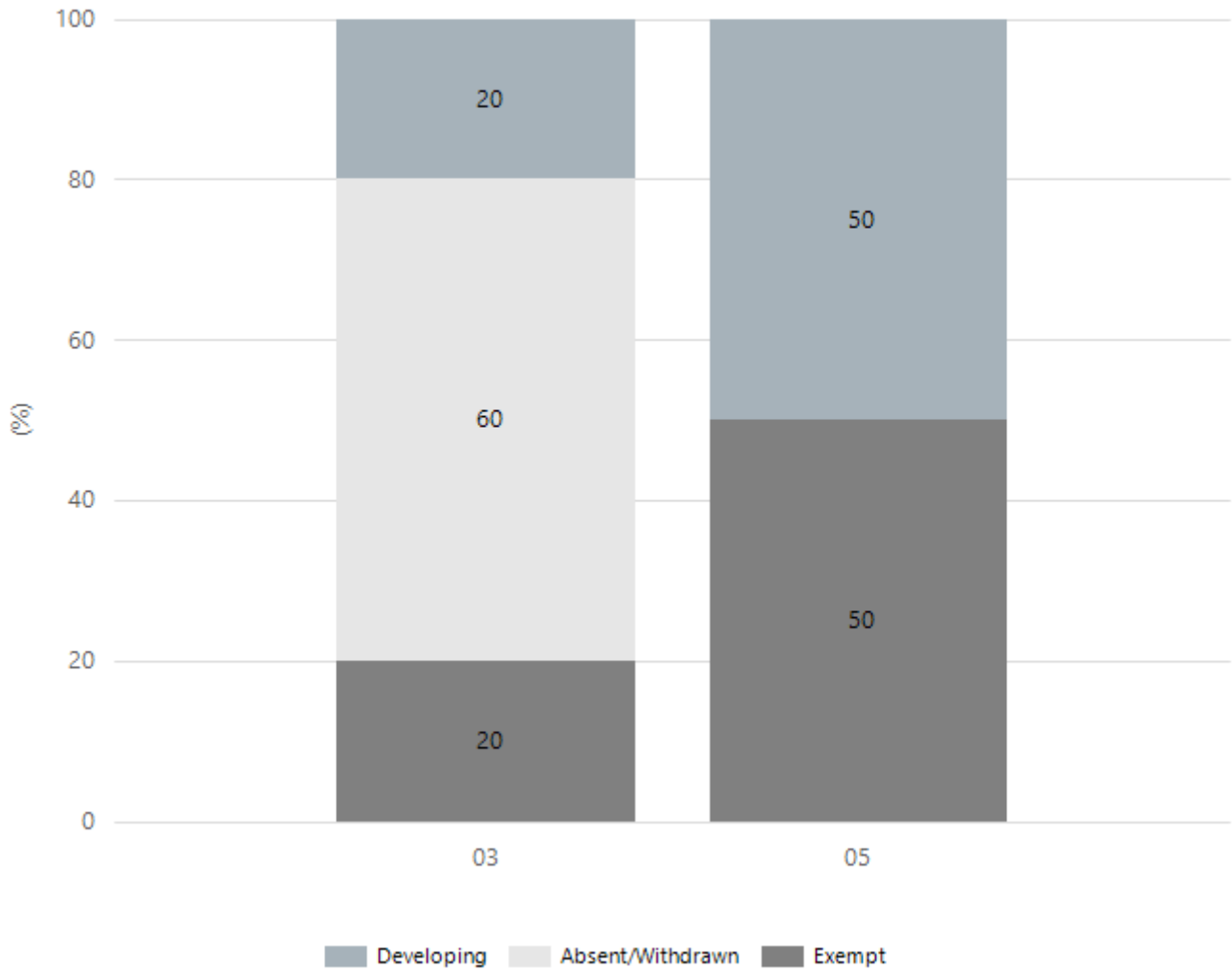


Year Level	03	05
Strong	2	
Developing		1
Absent/Withdrawn	2	
Exempt	1	1
Total	5	2

Data Source: Department for Education Assessment Data Holdings, 2023. When there are less than six students in a cohort, no data is supplied. Only data for Aboriginal learners is displayed.



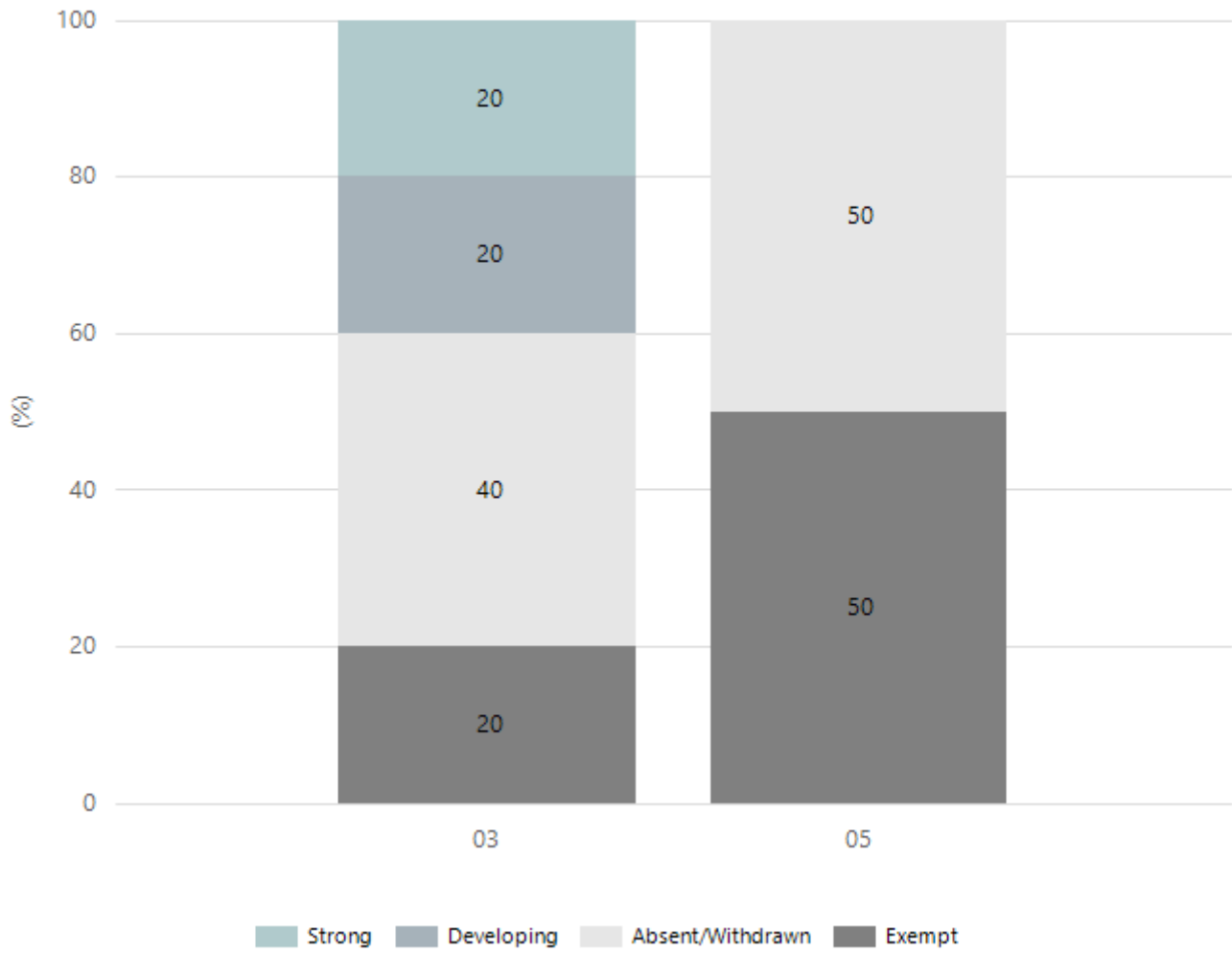
## Writing



Year Level	03	05
Developing	1	1
Absent/Withdrawn	3	
Exempt	1	1
Total	5	2

Data Source: Department for Education Assessment Data Holdings, 2023. When there are less than six students in a cohort, no data is supplied. Only data for Aboriginal learners is displayed.

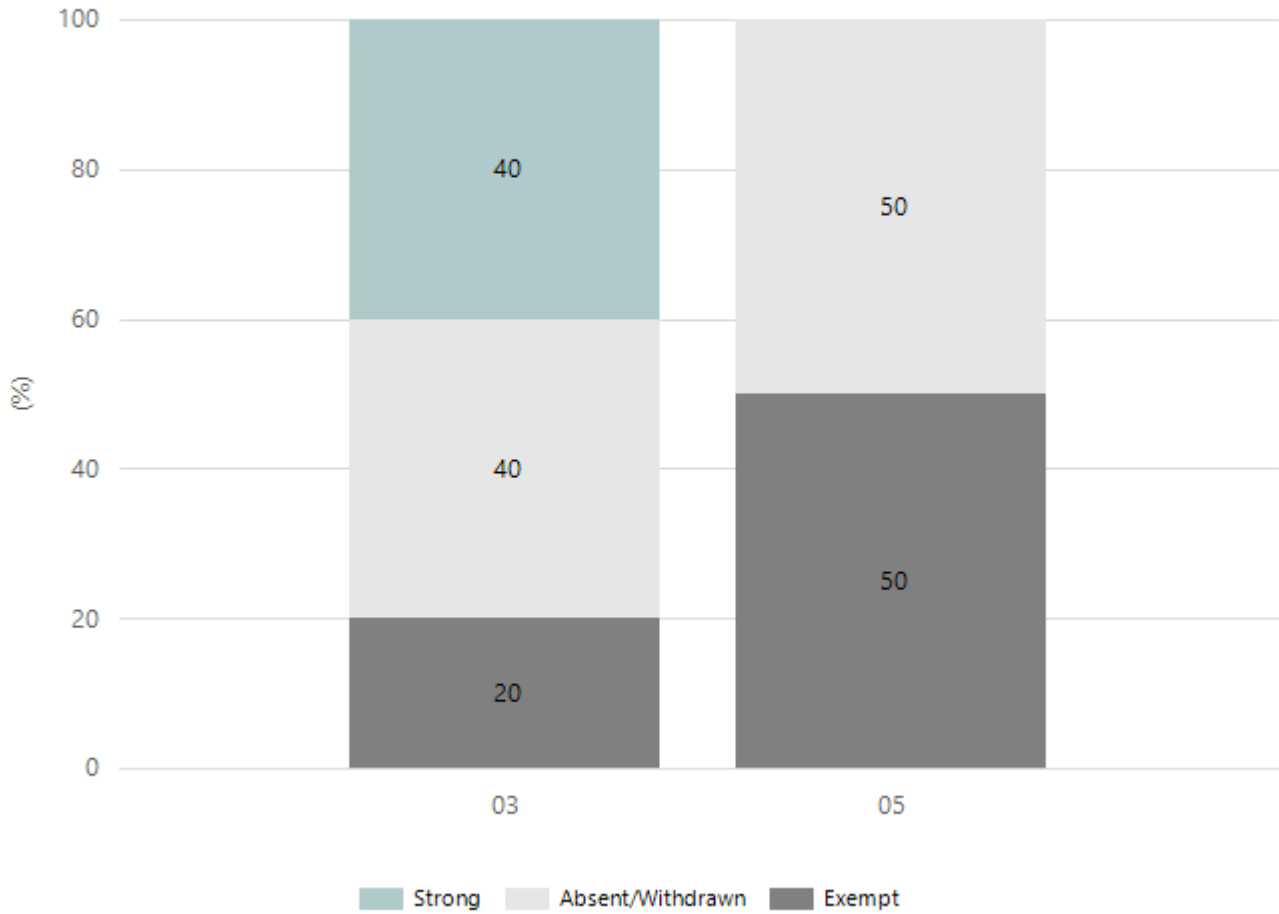
## Grammar



Year Level	03	05
Strong	1	
Developing	1	
Absent/Withdrawn	2	1
Exempt	1	1
Total	5	2

Data Source: Department for Education Assessment Data Holdings, 2023. When there are less than six students in a cohort, no data is supplied. Only data for Aboriginal learners is displayed.

## Spelling



Year Level	03	05
Strong	2	
Absent/Withdrawn	2	1
Exempt	1	1
Total	5	2

Data Source: Department for Education Assessment Data Holdings, 2023. When there are less than six students in a cohort, no data is supplied. Only data for Aboriginal learners is displayed.

## School Attendance

Year Level	2021	2022	2023
Reception	88.2%	80.6%	77.8%
Year 01	86.5%	80.6%	82.9%
Year 02	88.1%	82.2%	88.3%
Year 03	85.9%	83.4%	87.5%
Year 04	87.9%	82.6%	84.9%
Year 05	84.8%	76.6%	82.6%
Year 06	79.4%	78.9%	85.8%
Year 07	87.6%		
Primary Other	90.4%	82.1%	55.9%
Total	86.5%	80.9%	80.7%

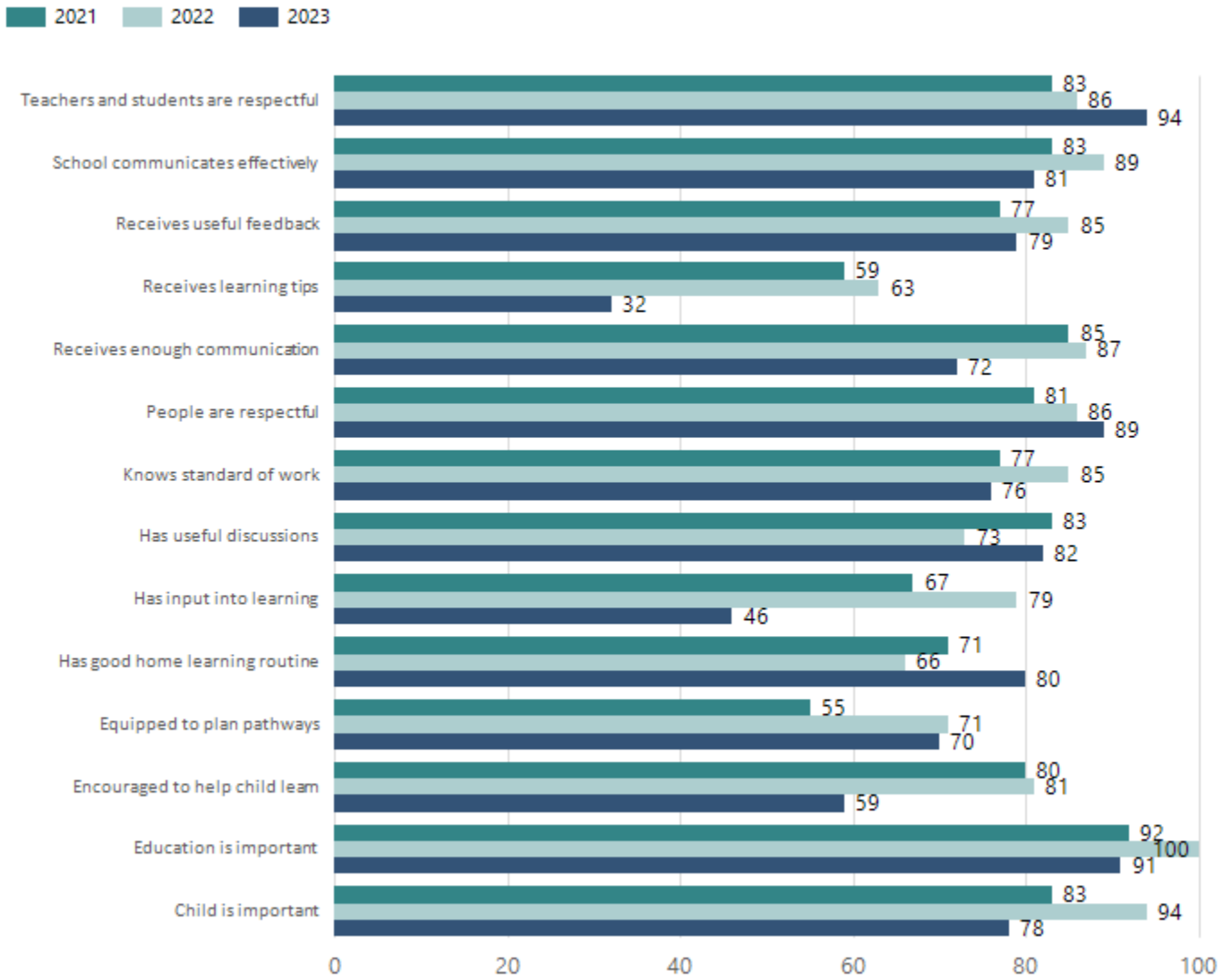
Data Source: Department for Education Attendance Data, Semester 1 Report 2023. A blank cell indicates there were no students enrolled. 'Primary Other' includes students enrolled in specialised education options. 'Secondary Other' includes students who have already spent a year at Year 12 and elected to undertake further study at Year 12.

## Attendance Comment

In South Australia, all children and young people must be in school from 6 years to 16 years old. They must attend a government or non-government school full time. From age 16 to 17 however, young people must attend school or an approved learning program (such as an apprenticeship, traineeship, accredited course or university). Schools and parents must encourage and support students to come to school every day. Parents and caregivers must make sure their child is enrolled in a school, and attends school all day and everyday it is open, unless a child is sick or has an approved exemption. Teachers and leaders actively follow up when a student misses school, including recording all absences and non-attendance. All schools in South Australia have local attendance procedures governed under the Education and Children's Services Regulations 2020.

# Parent Opinion Survey Results

Proportion of agree/strongly agree response(%)



Data Source: 2023 Department for Education Parent Opinions Survey, Term 3 2023.

## Intended Destination

Leave Reason	Number	%
NG - ATTENDING NON-GOV SCHOOL IN SA	7	23.0%
OV - LEFT SA FOR OVERSEAS	2	6.0%
TG - TRANSFERRED TO SA GOVERNMENT SCHOOL	22	71.0%

Data Source: Department for Education Destination Data Report, 2023. Data extract term 3 2023. Data shows recorded destinations for students that left the school in the previous year. Data is uploaded by schools in term 3 and may not reflect final or total figures at time of report creation.

# Highest Qualifications held by the teaching workforce and workforce composition

All teachers at this school are qualified and registered with the SA Teachers Registration Board.

Qualification Level	Number of Qualifications
Bachelor's degrees or Diplomas	14
Postgraduate Qualifications	6

Data Source: Data extracted from Mandatory Workforce Information Collections as on the last pay date of June 2023. As self-reported by staff in the system.

Please note: Data includes staff who are Actively employed and on extended paid leave. Please note only the highest qualification of the Teaching staff is reported. Excludes any number of other certifications earned.

## Workforce composition including indigenous staff

	Teaching Staff		Non-Teaching Staff	
	Indigenous	Non-Indigenous	Indigenous	Non-Indigenous
Full-Time Equivalent	0.0	18.8	0.6	10.5
Persons	0.0	21.0	1.0	18.0

Data Source: Data extracted from Mandatory Workforce Information Collection as on the last pay date of June 2023.

Please note: Data includes staff who are actively employed and on extended paid leave. "Indigenous category" is self-reported by staff in the system.

## Financial Statement

Funding Source	Amount
Grants: State	\$3 332 435
Grants: Commonwealth	\$1 000
Parent Contributions	\$37 796
Fund Raising	\$2 352
Other	\$1 582

Data Source: School supplied data.

# Governing Council Report

Dear Parents, Teachers, and Students,

I am delighted to present the Enfield Primary School chairperson's annual report for 2023.

2023 has been marked by significant progress and achievements, thanks to the collective efforts of our dedicated staff, supportive parents, and enthusiastic students. As the chairperson, it gives me great pleasure to highlight some key points of our accomplishments:

**Road Safety Awareness:** Ensuring the safety of our students has always been our top priority. During 2023, we intensified our efforts to raise awareness about road safety. We organised and collaborated with local authorities to implement measures to promote safe commuting practices for students.

**Installation of New Perimeter Fence:** Recognising the importance of safeguarding our school premises, we erected a new perimeter fence. This initiative protected the school building from vandalism and unauthorised entry. I am pleased to announce that the installation has been completed successfully, providing enhanced security for our students and staff.

**Academic Achievements:** Our students have demonstrated outstanding academic achievements this year, showcasing their dedication and hard work. We have seen remarkable progress in various subjects, along with commendable performances in extracurricular activities. I extend my heartfelt congratulations to all our students for their achievements and commend the efforts of our teachers in nurturing their talents.

**Fundraising:** Thanks to the governing council team's successful fundraising drives throughout the year, including the Mother's and Father's Day stalls.

**Outside School Hours Care (OSHC):** Once again, Karen has led an "exceeding" service for our families who need care before and after school. The OSHC is a vital part of our school community. I look forward to 2024 and an increase in the number of children using the service to see this essential service grow and continue its success far into the future.

As we reflect on the past year's accomplishments, we also look ahead with optimism and enthusiasm for future opportunities. Securing our school will allow the installation of a school and community garden, which I look forward to reporting about in next year's report. Together, we will continue to strive for excellence in education, foster a safe and nurturing environment for our students, and strengthen our bonds with the community.

I sincerely thank all our community for their unwavering support and dedication. Let us continue to work hand in hand towards the collective success and prosperity of our primary school.

Warm regards,

Simon Hodgson  
Governing Council Chairperson